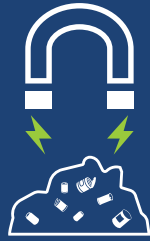




80,5%

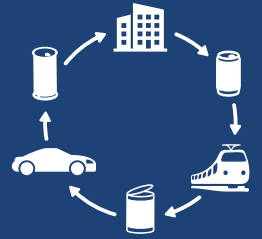
the most recycled packaging material in Europe with 80,5% recycled in 2022



unique magnetic properties make steel easy and economical to separate from any waste stream



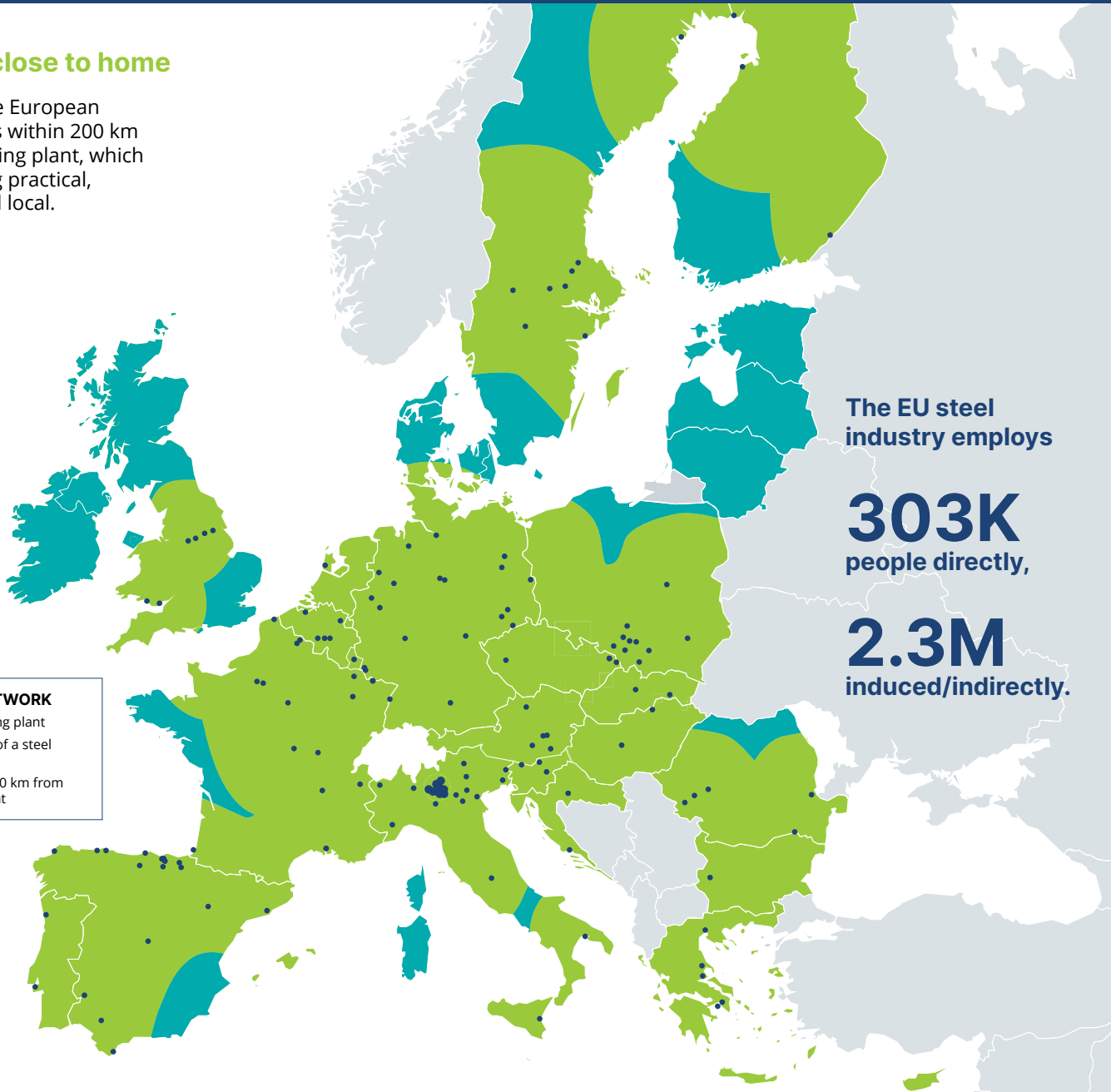
all primary steel plants across Europe use steel scrap as a cooling agent for new steel



100% of recycled steel is used in a closed material loop

Recycling close to home

Over 90% of the European population lives within 200 km of a steel recycling plant, which makes recycling practical, sustainable and local.



The EU steel industry employs

303K
people directly,

2.3M
induced/indirectly.

STEEL PLANT NETWORK

- Steel plant = Recycling plant
- Area within 200 km of a steel recycling plant
- Area further than 200 km from a steel recycling plant

Established in 1986, and formerly known as APEAL, we represent the five major European producers of steel for packaging

**ACCIAIERIE
D'ITALIA IN A.S.**



TATA STEEL



U.S. Steel Košice

Steel for packaging is used in a wide variety of applications, such as containers and closures for human and pet foods, aerosols, personal care, household and automotive care products, industrial products and paints, giftware and promotional products. It is also widely used for hermetically closing glass jars and bottles.



We are committed to help Europe improve its use of resources, reduce waste and close the material loop



HIGH RECYCLING

Using recycled steel recovers raw materials, reduces emissions and consumes less energy



COMBAT FOOD WASTE

No other packaging material equals steel's strength, total barrier properties or shelf life.



CIRCULAR ECONOMY

Steel for packaging lifecycle is an example of the circular economy at work.

More about steel's real and successful recycling story can be found in our report **"Why steel recycles forever"**



Steve Claus,
Secretary General

+32 496 541411

steve@steelforpackagingeurope.eu



Metka Cavka Luciani,
Head of EU Affairs

+32 499 704407

metka@steelforpackagingeurope.eu